



WIDE BAY **water**



WIDE BAY **water**

Did you **KNOW?**

A leak rate of 20 litres an hour equals 480 litres per day – over 14,000 litres per month.

If left unresolved for one year the amount of water lost would equate to over 175,000 litres.

That's hundreds of dollars in terms of your water bill.

31 Ellengowan St, PO Box 5499
Hervey Bay Queensland 4655
t 1300 79 49 29 f 07 4197 4455
e enquiry@frasercoast.qld.gov.au

www.widebaywater.qld.gov.au

Do you have a **WATER LEAK?**

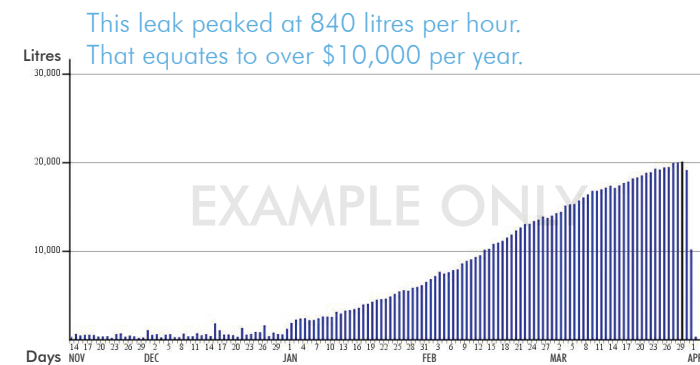
It could be costing
you money.

water today  water tomorrow

water today  water tomorrow

The facts on LEAKS.

- Common types of leaks are toilet, taps and underground pipes. The pipe from the water meter that connects to your house can often have small cracks which get bigger over time.
- Fixing household leaks can save you money.
- Keep your home leak free by repairing taps and toilets. In most cases, just parts have to be replaced and don't require a major investment.



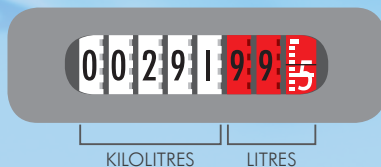
? Where is my water meter?



Your meter is a low metal pipe structure with a tap handle at one end and a meter dial at the other. It is usually located near your property's front boundary; normally at the centre, far left or far right side. Some are below ground level.

? How do I read my water meter?

Below is a diagram of the dials on your water meter. Black numbers on white indicate kilolitres (kL) – one kilolitre equals 1000 litres, and black/white numbers on red indicate litres.



Numbers are read from left to right. For example, the reading above is 291kL as only kilolitres are used to calculate your bill. To check for a leak you will need to read all the numbers.

Leak detection

Check your water meter before and after a minimum two-hour period when no water is being used. If the meter does not read the same you probably have a leak.

Toilets

If your toilet is running constantly you could be wasting between 20 and 1400 litres each day.

- An easy way to check if your toilet is leaking is to add a few drops of food colouring to your toilet cistern. Don't flush for at least an hour, if the colour shows up in the bowl without flushing, you have a leak. Make sure to flush afterwards to avoid staining.
- If your toilet is leaking, the cause is usually a faulty washer seal or a problem with the cistern inlet valve. Over time inexpensive rubber parts can decay and it's best to replace the seal.
- We recommend that you get a licensed plumber to fix leaks, as they know which seals and washers are required for different toilets.
- If you want to fix it yourself, take the part of the toilet that needs replacing to your local plumbing retail outlet and the staff will help you select the correct replacement parts.

Taps and showerheads

- One dripping tap can waste more than 2,000 litres a month.
- Check tap washers for wear and replace if necessary.
- Most showerhead leaks can be fixed by making sure the connection is fitted properly. If you replace an old showerhead with a new one, check that it's recommended by the Water Efficiency Labelling and Standards (WELS) scheme. www.waterrating.gov.au

Outdoors

- If you have an irrigation system, check the hose for splits and that connections are tightly fixed.
- Check outdoor taps – galvanised iron pipe can corrode over time. Look out for areas that seem to be growing more than usual; the leak may be watering your garden.
- If you cannot find any leaks and your water meter is showing water being used, you may have an underground pipe leak.
- Underground leaks can waste a lot of water and easily go unnoticed. It is advisable to monitor your water meter on a weekly basis. If you notice significant changes contact your local plumber who can investigate the leak.