

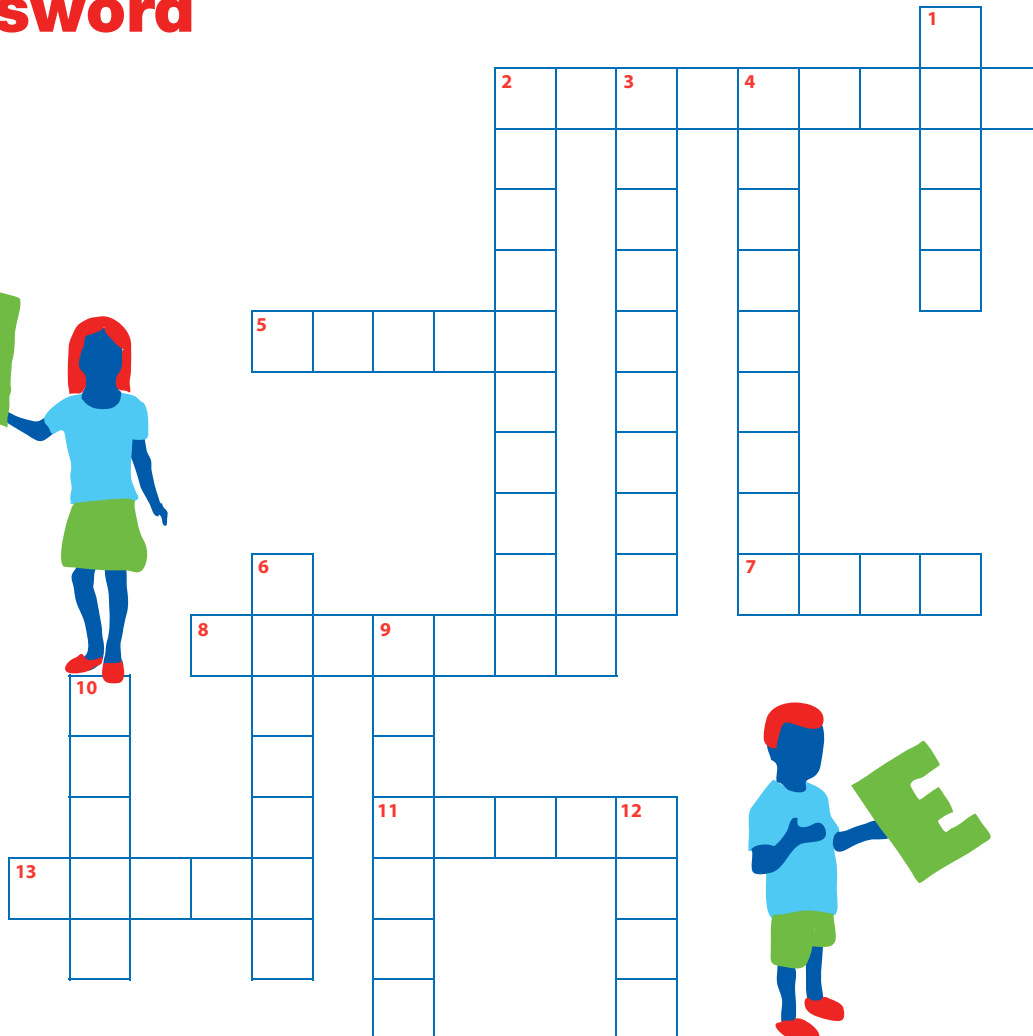
Schools Recycle Right Challenge Crossword

Schools
Recycle
Right



NATIONAL
RECYCLING WEEK

PLANET ARK



Across

- 2 Milk and juice cartons are mostly made of _____
- 5 _____ and cardboard can be collected in most household recycling bins
- 7 An exchange of unwanted items with friends and family that reduces waste is a _____
- 8 Worms make food and garden scraps into _____
- 11 Cans are either made of aluminium or _____
- 13 Reduce, _____, Recycle

Down

- 1 If you do this to your empty aluminium cans, you can fit more in the recycling bin
- 2 '_____ 4 Planet Ark' is a free program to recycle your printer cartridges
- 3 National _____ Week was founded by Planet Ark
- 4 Lead acid _____ are found in cars and can be recycled to recover lead and plastic
- 6 These can be recycled through MobileMuster
- 9 Use reusable bags for shopping, instead of _____ bags
- 10 How many arrows are there in a recycling symbol?
- 12 Take these off bottles and jars before recycling

The Schools Recycle Right Challenge is proudly sponsored by the Packaging Covenant

Major
Sponsor



Associate
Sponsors



Supporting
Sponsor



