

August 2021

Pavement Reconstruction — Dundowran Road (Pialba Burrum Heads Road to Lower Mountain Road)

PROJECT:

This project provides for pavement reconstruction works of approximately 1km of roadway along Dundowran Road, between Pialba Burrum Heads Road and Lower Mountain Road.

The road reconstruction works are being undertaken as a result of inspections carried out as part of Council's ongoing asset inspection program which identified that the road was showing signs of pavement failure and distress.

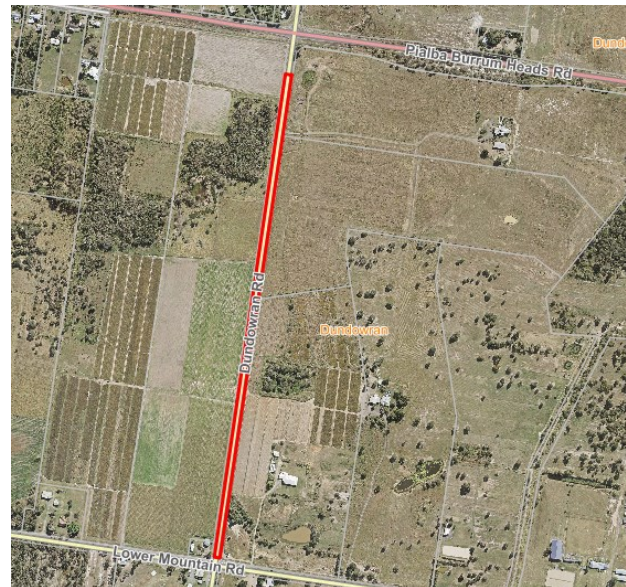
PROJECT ESTIMATE:

\$1.5M (this project is partly funded through the State Government's Transport Infrastructure Development Scheme)

PROJECT SCOPE OF WORKS:

The Project scope is as follows:

- Earthworks and excavation;
- Kerb and channel installation
- Replacement of existing stormwater drainage culverts
- Bitumen surfacing;
- Driveway accesses;
- Linemarking and signage;
- Reinstatement works.



The traffic management plan that will be put in place for the duration of the construction period will be developed prior to works commencing.

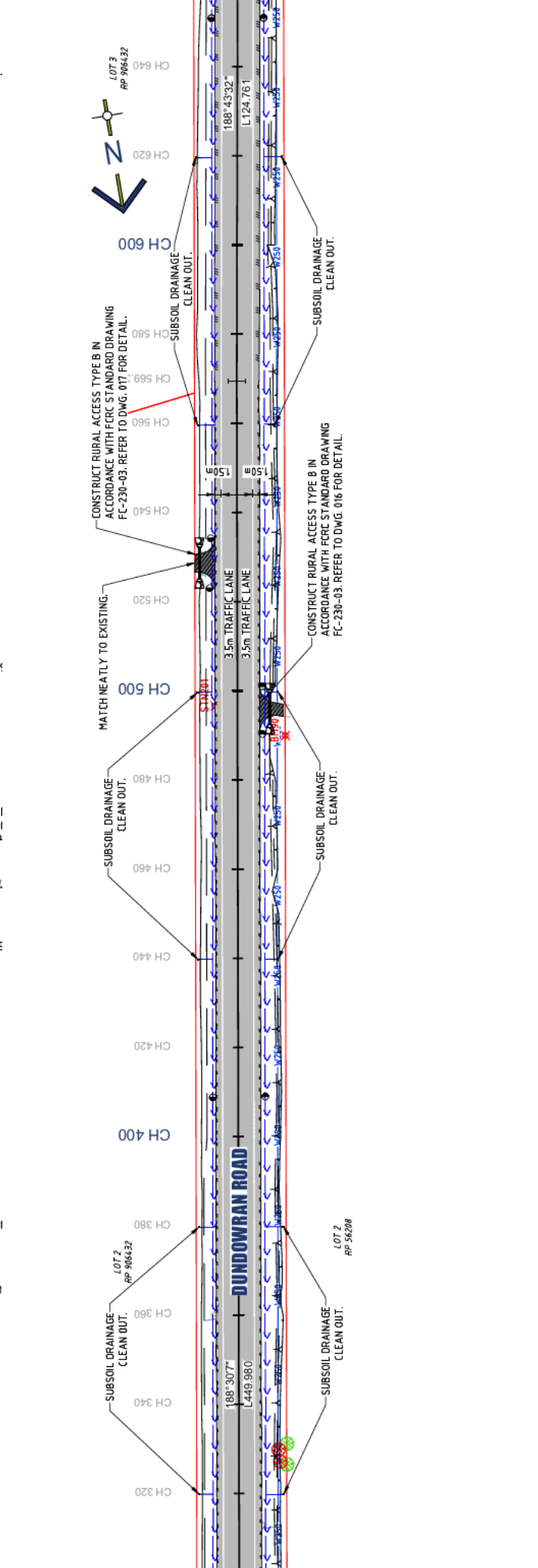
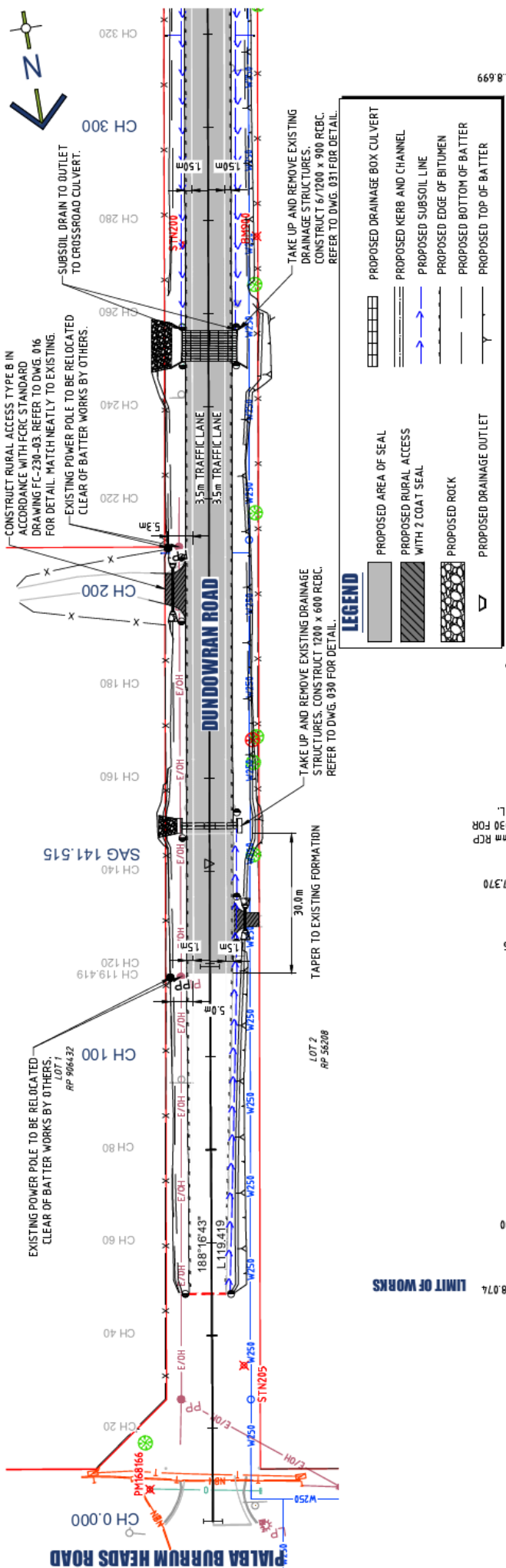
INDICATIVE PROJECT MILESTONES

July 2021	Final Design
July/Sept2021	Tender Period
Oct 21/Feb 22	Construction Period
March 2022	Project Completion

Note: Project milestones are subject to contract and weather and may change.

Pavement Reconstruction — Dundowran Road

(Pialba Burrum Heads Road to Lower Mountain Road)



8.699

LI 130 FOR RCP

7.370

5

10

8.074

LIMIT OF WORKS

LOT 2
RP 56208

LOT 2
RP 56208

LOT 2
RP 906432

LOT 1
RP 906432

PIALBA BURRUM HEADS ROAD

DUNDOWRAN ROAD

DUNDOWRAN ROAD

DUNDOWRAN ROAD

DUNDOWRAN ROAD

DUNDOWRAN ROAD



LOT 3
RP 906432

LOT 2
RP 56208

LOT 2
RP 906432

CH 0.000

CH 20

CH 40

CH 60

CH 80

CH 100

CH 120

CH 140

CH 160

CH 180

CH 200

CH 220

CH 240

CH 260

CH 280

CH 300

CH 320

SAG 141.515

CH 119.419

CH 119.419

CH 120

CH 140

CH 160

CH 180

CH 200

CH 220

CH 240

CH 260

CH 280

CH 300

CH 320

CH 340

CH 360

CH 380

CH 400

CH 420

CH 440

CH 460

CH 480

CH 500

CH 520

CH 540

CH 560

CH 580

CH 600

CH 620

CH 640

188°16'43"

L 119.419

188°43'32"

L 124.761

188°30'7"

L 449.980

188°30'7"

L 449.980

188°30'7"

L 449.980

188°30'7"

L 449.980

188°30'7"

L 449.980

188°30'7"

L 449.980

188°30'7"

L 449.980

188°30'7"

L 449.980

188°30'7"

L 449.980

188°30'7"

L 449.980

188°30'7"

L 449.980

188°30'7"

L 449.980

188°30'7"

L 449.980

188°30'7"

L 449.980

188°30'7"

L 449.980

188°30'7"

L 449.980

188°30'7"

L 449.980

188°30'7"

L 449.980

188°30'7"

L 449.980

188°30'7"

L 449.980

188°30'7"

L 449.980

188°30'7"

L 449.980

Pavement Reconstruction — Dundowran Road (Pialba Burrum Heads Road to Lower Mountain Road)

