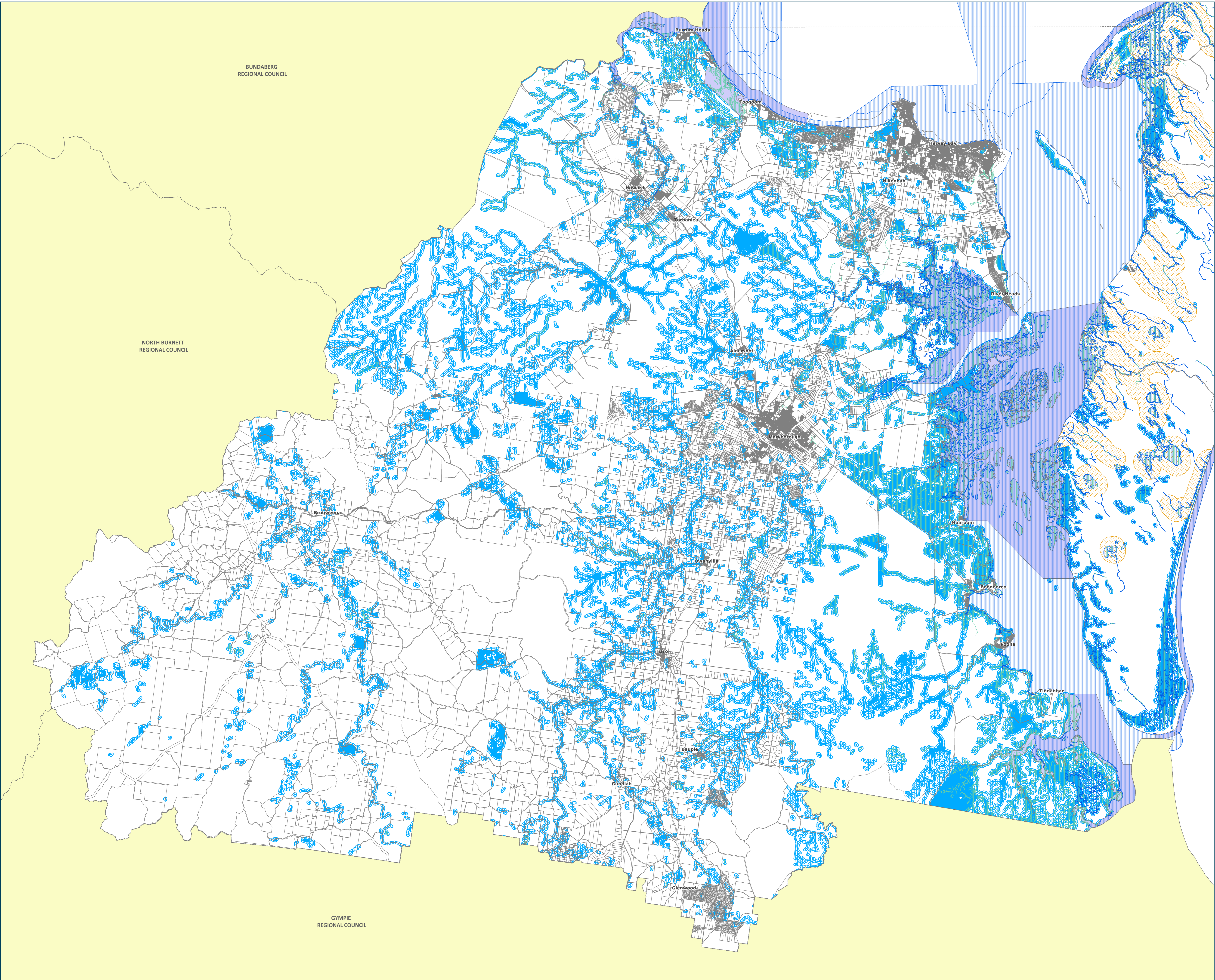


**Legend**

- MSES High Ecological Value Waters
  - Watercourse
- MSES High Ecological Significance Wetlands
- MSES Declared Fish Habitat Areas
- MSES High Ecological Value Waters
  - Wetland
- MSES Strategic Environmental Area
  - Designated Precinct
- Local Wetlands Buffer
  - Local Wetlands
- Local Wetlands
- DCDB
  - DWRME Release 06/03/2018
- Fraser Coast Boundary
- Other Local Government Boundaries



Disclaimer: While every care is taken to ensure the accuracy of this product Fraser Coast Regional Council makes no representation or warranty about the accuracy, reliability, completeness or suitability for any particular purpose and declines all responsibility and liability (including without limitation, liability or negligence) for all damages, losses, expenses (including but not limited to consequential damage) and costs (no matter how or in what amount) arising in any way or for any reason.  
 © Crown and Council Copyright Reserved 09/07/2018  
 Geocentric Datum of Australia 1994 (GDA94)



Approx Scale @ A0 1:115,000

